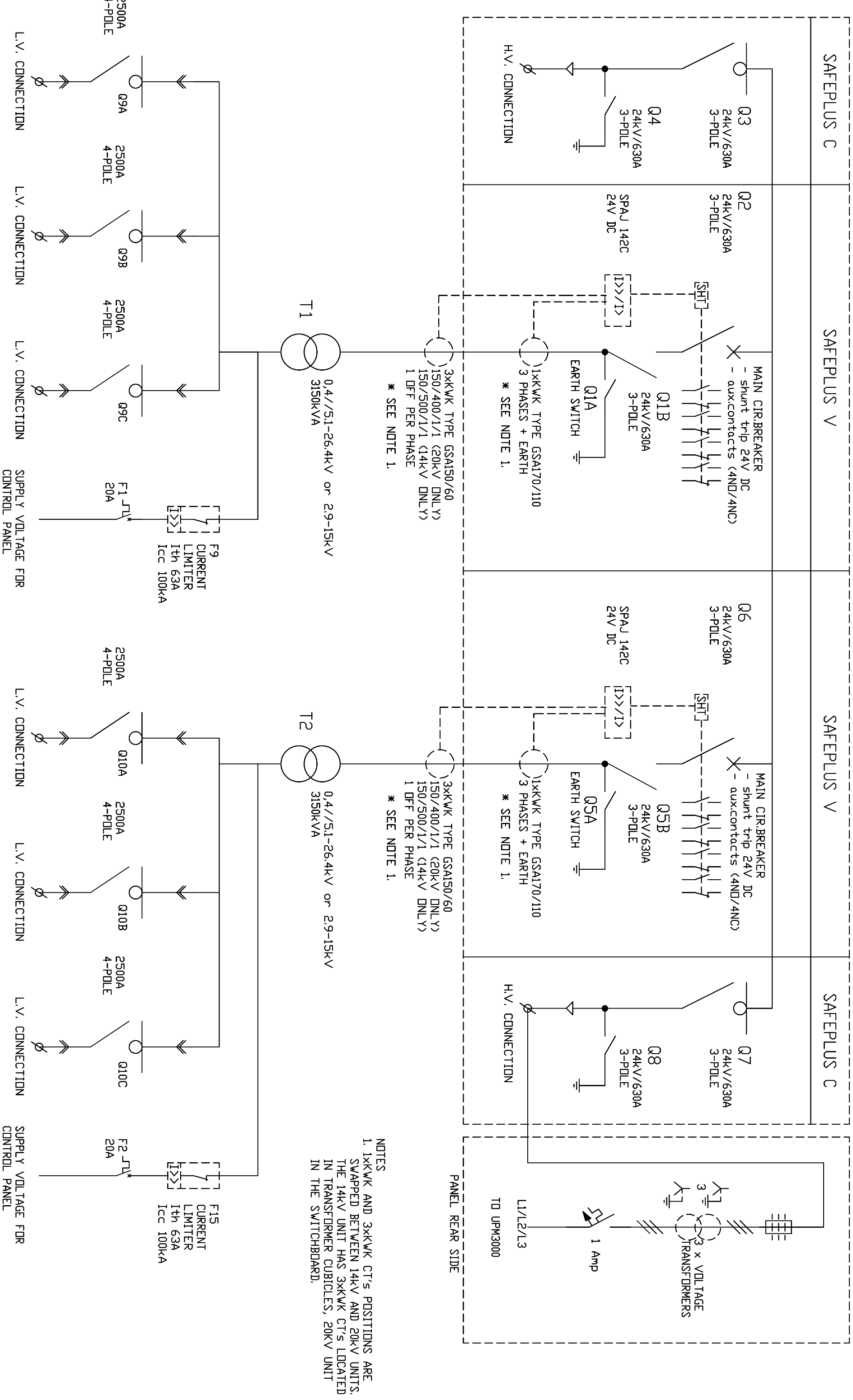


1	Model	Ref	C20/6.3/..20kV
2	Part Number	Ref	605004 & 605009*
3	Specification	Ref	TBA
4	Installation Drawing	Ref	D210474
5	Maximum Ambient	°C (°F)	
6	Electrical Rating		6300kVA, 0.8pf
7	Transformer		
	Manufacturer		ABB
	Type		CTMU24 HA 3150
	Quantity		2
	Rated Output		6300kVA (2 x 3150kVA) 7500kVA (2 x 3750kVA) With fans running
	Rated Voltages		
	Rated High Voltages	-YNynO	20kV ±10% 15kV (@max 2500kVA) 10kV ±10%
		-Dyn11	11.5kV ±10% 5.7kV ±%
	Rated Low Voltage		0.40kV
	Type of Cooling		3150kVA ONAN / 3750kVA ONAF
	Impedance (each transformer)		5.9%, 50Hz
	No Load Losses (each transformer)		3400W, 50Hz – ABB
	Load Losses (each transformer)		32000W, 50Hz
8	LV Switchgear		
	Manufacturer		Holec
	Type		QP2500N2
	Number of Poles		4
	Rating		2500A
9	HV Switchgear		
	Manufacturer		ABB
	Type		SafePlus
	Transformer Incomers		2 off SafePlus
	Nominal Voltage		24kV
	Nominal Current		630A
	Breaking Current		12kV : 21kA
	Making Current		12kV : 52.5kA 24kV : 40kA
	HV Cable Feeders		2 off SafePlus
	Nominal Voltage		24kV
	Nominal Current		630A

	Peak Withstand Current		12kV : 63kA 24kV : 50kA
	Short time Withstand Current (3 sec)		12kV : 21kA 24kV : 21kA
10	Electrical Terminations		
	LV		M12
	HV		M12
11	Overall Dimensions		
	- Length	Metres (feet)	6.06 (20'0")
	- Width	Metres (feet)	2.44 (8'0")
	- Height	Metres (feet)	2.59 (8'6")
12	Weight	Kg (lbs)	2100 (46297)



1x1kkWK TYPE GSA170/110  
3 PHASES + EARTH  
\* SEE NOTE 1.

3x3kkWK TYPE GSA150/60  
150/400/1/1 (20kV DNL Y)  
150/500/1/1 (14kV DNL Y)  
1 DFF PER PHASE  
\* SEE NOTE 1.

1x1kkWK TYPE GSA170/110  
3 PHASES + EARTH  
\* SEE NOTE 1.

3x3kkWK TYPE GSA150/60  
150/400/1/1 (20kV DNL Y)  
150/500/1/1 (14kV DNL Y)  
1 DFF PER PHASE  
\* SEE NOTE 1.

T1  
0.4//5.1-26.4kV or 2.9-15kV  
3150kVA

T2  
0.4//5.1-26.4kV or 2.9-15kV  
3150kVA

NOTES  
1. 1kkWK AND 3kkWK CT'S POSITIONS ARE SWAPPED BETWEEN 14kV AND 20kV UNITS. THE 14kV UNIT HAS 3kkWK CT'S LOCATED IN TRANSFORMER CUBICLES, 20kV UNIT IN THE SWITCHBOARD.

F9  
CURRENT LIMITER  
1th 63A  
Icc 100kA

F15  
CURRENT LIMITER  
1th 63A  
Icc 100kA

L.V. CONNECTION L.V. CONNECTION L.V. CONNECTION L.V. CONNECTION L.V. CONNECTION L.V. CONNECTION L.V. CONNECTION L.V. CONNECTION  
SUPPLY VOLTAGE FOR CONTROL PANEL

L.V. CONNECTION L.V. CONNECTION L.V. CONNECTION L.V. CONNECTION L.V. CONNECTION L.V. CONNECTION L.V. CONNECTION L.V. CONNECTION  
SUPPLY VOLTAGE FOR CONTROL PANEL



SINGLE LINE DIAGRAM  
6.3MVA TRANSF. CONTAINER